

PREMIUM
TECHNOLOGY
ART

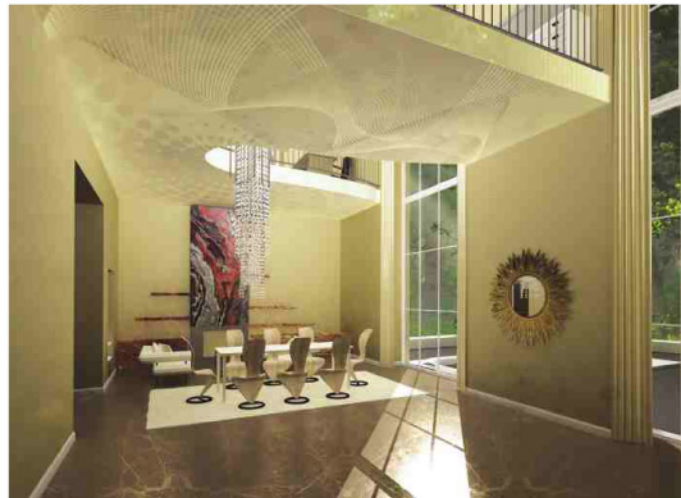
**SAROS
DESIGN**
STRETCH CEILINGS

**DECOR ART
2d EDITION**



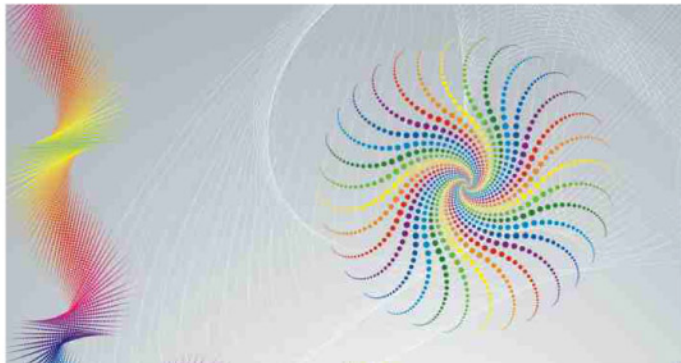
The ornament is an integral part of art, the art reflection of the world view and the nations' culture. It is used for decoration practically everything created by the human, whether it is subjects in an everyday life or the architectural constructions. The stretch ceilings are not an exception.

This is the second appendix to the "ART Collection" catalogue where you will find the various graceful and almost universal ornaments which are capable to transform a ceiling in a precious decoration.



THERE IS AN EXAMPLE OF THE VECTOR PRINT IN THE INTERIOR





On this spread you can see a print difference on the different foils

MAT FOIL

The mat texture with the absence of shine in a combination with the image fits to any type of an interior

GLOSSY FOIL

A high quality of the image in a combination with the properties of the glossy texture will give a special depth and brightness to each picture

SATIN FOIL

The satin texture, as well as the mat one, in a combination with the image can give elegance to an interior

DECOR ART

DECOR ART

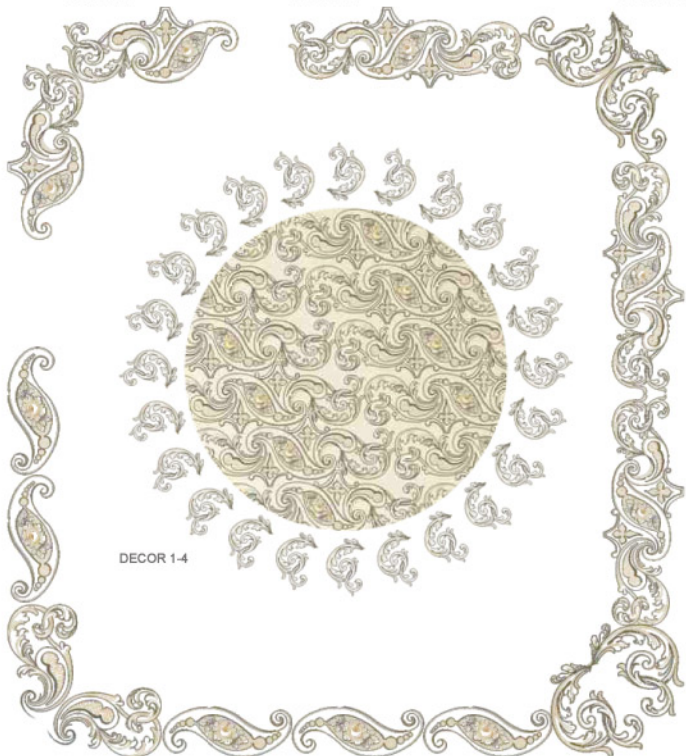
The ornament organizes the things of our practical world. Covering the functional forms, the ornament sets the ways of their perception, directs a gaze motion. The ornament can give a surface the character of an unclosed fragment, filling with its proportional grid, or accurately limit it, having LED round on edge a border. It can help to focus a subject, having designated its direction.

SAROS DESIGN

DECOR 1-1

DECOR 1-2

DECOR 1-3



DECOR 1-4

DECOR 1-5

DECOR 1-5

DECOR 1-6

You can change a colour, the sizes and image proportions.
The maximum size for this print is unlimited.

DECOR ART

DECOR ART

There are some ornaments in the Renaissance style on this page. The Renaissance beginning was in Italy in the late Middle Ages, where great Michelangelo has set for the first time an example of the extremely free relation to the principles and the forms of an ancient art.

SAROS DESIGN

DECOR 2-1

DECOR 2-2



DECOR 2-4

DECOR 2-3

DECOR 2-5

You can change a colour, the sizes and image proportions.
The maximum size for this print is unlimited.

DECOR ART

DECOR ART

The decorative motives of a modernist style comprise the stylized flowers and the buds with the narrow, long stalks and the leaves. The ornament in a modernist style was allocated with a symbolical sense, a metaphor and mysticism. For example, a bud is a symbol of a new life appearance.

SAROS DESIGN

DECOR 3-1



DECOR 3-2

DECOR 3-3

You can change a colour, the sizes and image proportions.
The maximum size for this print is unlimited.

DECOR ART

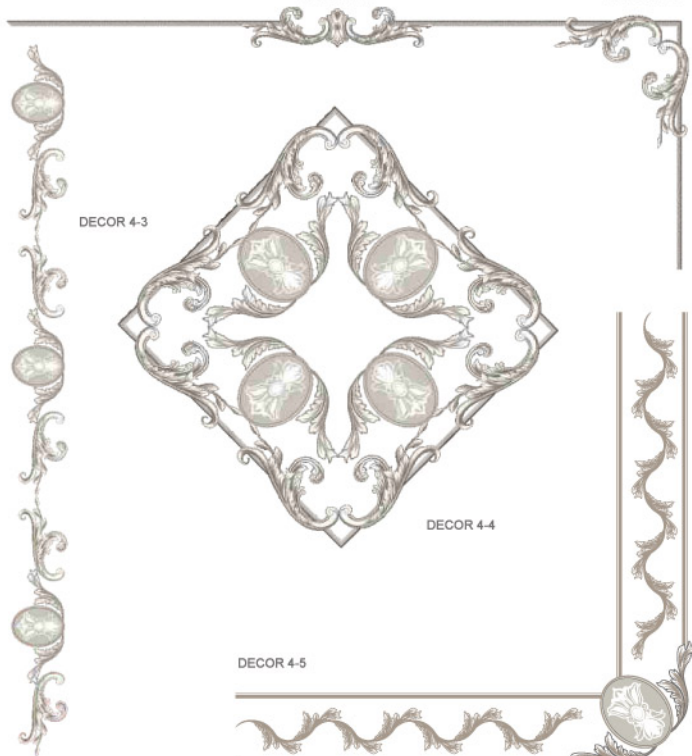
DECOR ART

The ornaments presented on this page refer to one of the leading art styles - to Classicism. Classicism has Ancient Greek and Roman sources. The style of the ancient Romans was not copied completely, but creatively used in classicism. It has chosen its rationalistic essence. This style has accurately emphasized all the verticals and the horizontals of an interior.

SAROS DESIGN

DECOR 4-1

DECOR 4-2



DECOR 4-3

DECOR 4-4

DECOR 4-5

DECOR 4-6

You can change a colour, the sizes and image proportions.
The maximum size for this print is unlimited.

DECOR ART

DECOR ART

Rococo still maintained the Baroque taste for the complex forms and the intricate patterns, but by this point, it had begun to integrate a variety of diverse characteristics, including a taste for Oriental designs and asymmetric compositions.

SAROS DESIGN

DECOR 5-1



DECOR 5-2



DECOR 5-3



DECOR 5-4

DECOR 5-5



DECOR 5-6

You can change a colour, the sizes and image proportions.
The maximum size for this print is unlimited.

DECOR ART

DECOR ART

The intertwined plants and fantastic animals, endowed with the certain symbols and allegories, are actively used in the Byzantine ornament. The Persian and Arabian art had a great influence with the Byzantine ornament.

SAROS DESIGN

DECOR 6-1



DECOR 6-2



DECOR 6-3



DECOR 6-4

You can change a colour, the sizes and image proportions.
The maximum size for this print is unlimited.

DECOR ART

DECOR ART

Baroque decors always reflect the idea of satiation and even oversatiation of the Universe.

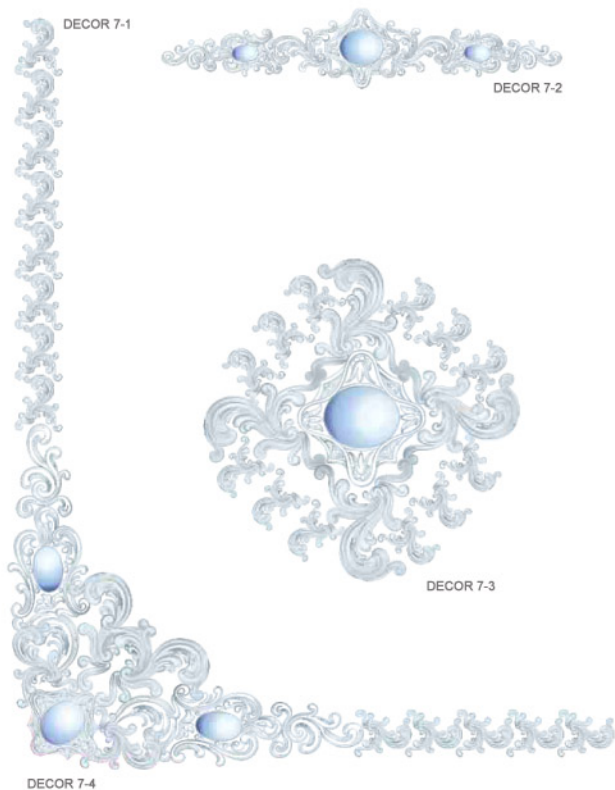
SAROS DESIGN

DECOR ART

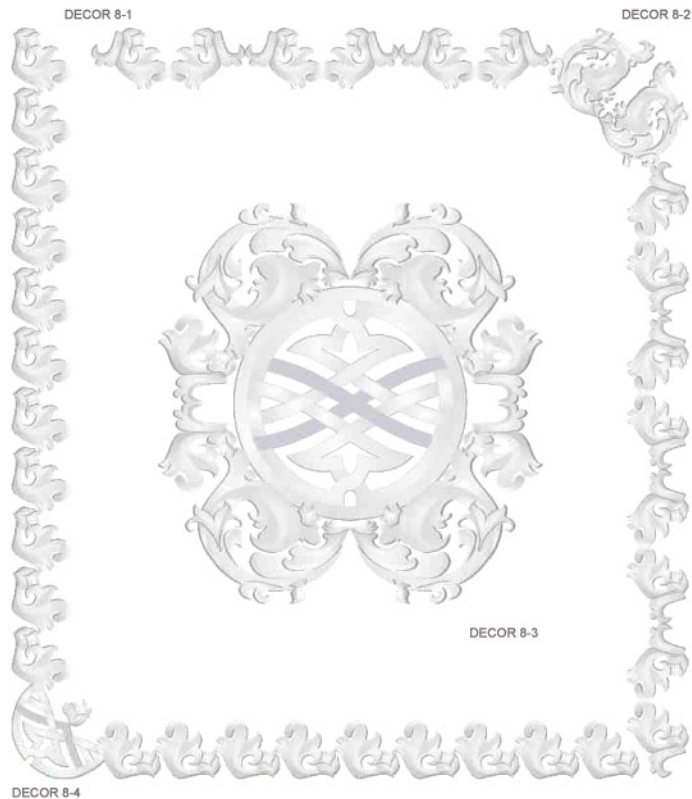
DECOR ART

The vickerwork has come to decorative art from Sarmatians who have transferred it to the German tribes. Further it has taken pride of place in a carved decor of Romance cathedrals, in the Bulgarian, Armenian, Russian products and the constructions. It gives completeness and organizes the diversified elements.

SAROS DESIGN



You can change a colour, the sizes and image proportions.
The maximum size for this print is unlimited.



You can change a colour, the sizes and image proportions.
The maximum size for this print is unlimited.

DECOR ART

DECOR ART

The arabesque is an elaborative application of the repeating geometric forms that often echo the forms of plants and animals.

The arabesque was popular in Renaissance, and later the arabesque came to be call a freakish ornament only from vegetative forms (the stylized leaves, flowers, stalks and so on) in a difficult interlacing.

SAROS DESIGN

DECOR 9-1



DECOR 9-2



DECOR 9-3



You can change a colour, the sizes and image proportions.
The maximum size for this print is unlimited.

DECOR ART

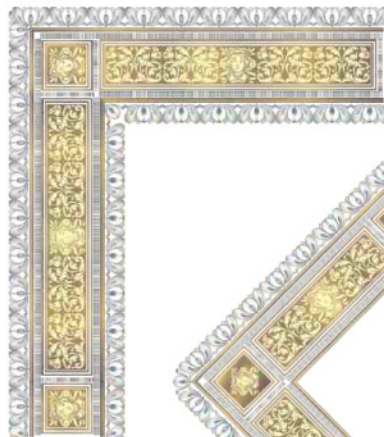
DECOR ART

The Victorian era is known for its eclectic revival and interpretation of historic styles and the introduction of cross-cultural influences from the Middle East and Asia in furniture, fittings, and interior decoration.

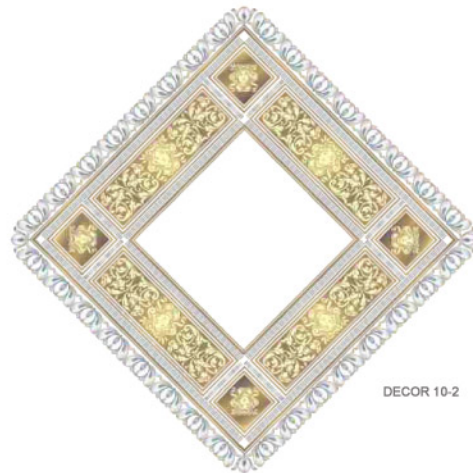
Grotesques, with their interlacing of the fantastic and the real details, with fancifulness and extravagance are also used. The grotesque composition includes images of fauns, nymphs, cupids.

SAROS DESIGN

DECOR 10-1



DECOR 10-2



DECOR 10-3



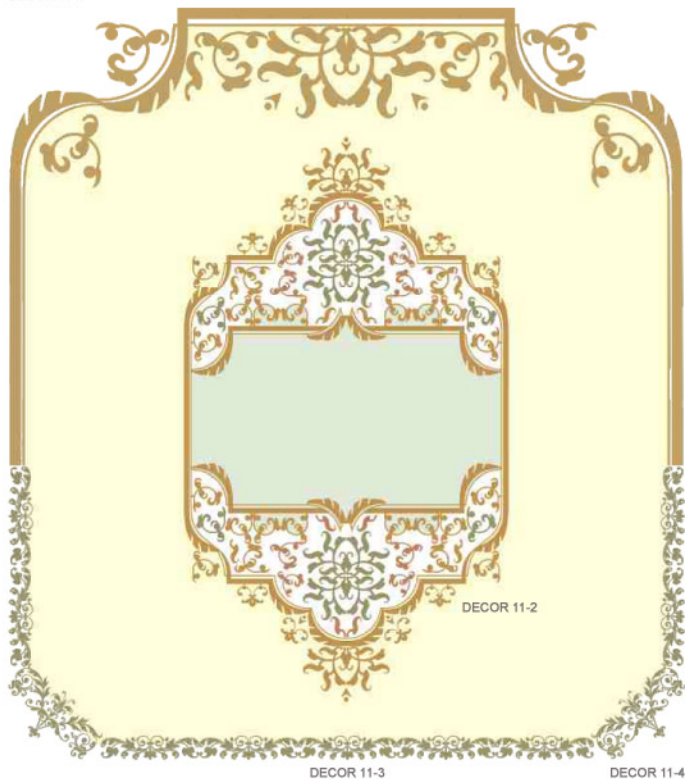
You can change a colour, the sizes and image proportions.
The maximum size for this print is unlimited.

DECOR ART

DECOR ART
Having arisen in the infancy of man, the ornament emotionally and aesthetically enriches the variety of the forms and a figurative structure of a premise. It can not only decorate a ceiling, but also organize, underline its form. These ornaments can be volume or deepened, simulating the embossment.

SAROS DESIGN

DECOR 11-1



You can change a colour, the sizes and image proportions.
The maximum size for this print is unlimited.

DECOR ART

DECOR ART
The forthcoming of the vegetative motives in ornament refers to the art of Ancient Egypt. Here is a modern variant of a vegetative ornament. It can be executed in a volume variant, simulating a modeled decor, a carving, gliding or a moulding.

SAROS DESIGN

DECOR 12-1

DECOR 12-2



You can change a colour, the sizes and image proportions.
The maximum size for this print is unlimited.

DECOR ART

DECOR ART

The Byzantine decor was developed in the bowels of the Hellenic and the Roman art cultures. The great influence on it had the Persian and the Arabian art from which formally used the ornamental scheme and the decorative effect.

SAROS DESIGN

DECOR 13-1



DECOR 13-2

DECOR 13-3

You can change a colour, the sizes and image proportions.
The maximum size for this print is unlimited.

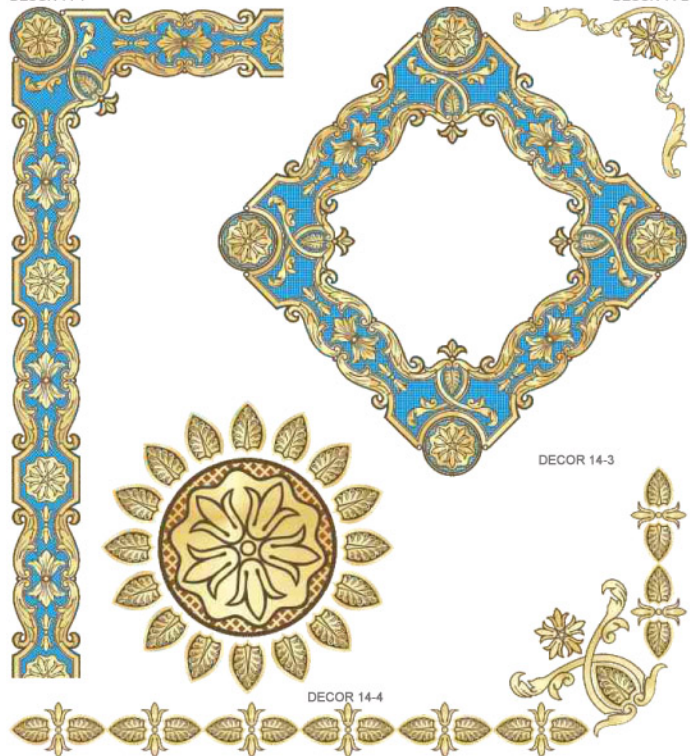
DECOR ART

DECOR ART

The rosetta is the most widespread motive in the ornament. Since ancient times its round form was perceived as a sun symbol, designated the idea of the phenomena circulation in the Universe.

SAROS DESIGN

DECOR 14-2



DECOR 14-3

DECOR 14-4

DECOR 14-5

You can change a colour, the sizes and image proportions.
The maximum size for this print is unlimited.

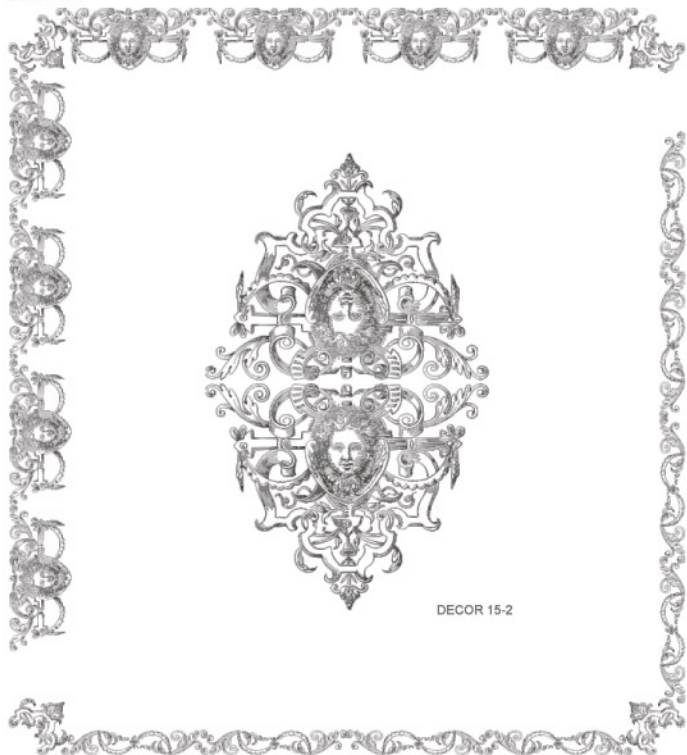
DECOR ART

DECOR ART

The Empire style was based on the aspects of the Roman Empire. A white colour with gilding prevail. The orderliness, a full steadiness of the parts and a strict symmetry, a cold solemnity, reasonableness and the exact calculation always attend this style.

SAROS DESIGN

DECOR 15-1



DECOR 15-2

DECOR 15-3

You can change a colour, the sizes and image proportions.
The maximum size for this print is unlimited.

DECOR ART

DECOR ART

The Baroque (is derived from the Italian word "barocco" a "rough or imperfect pearl") is one of the most magnificent and colourful styles, started roughly at the beginning of the 17th century in Rome, Italy. The Baroque goes for the greatness and a spatial scope in an interior design. The masters painted with a special pleasure the cupids and the angels, the draped fabrics, the bouquets, the fruit garlands during this epoch.

SAROS DESIGN

DECOR 16-1

DECOR 16-2



DECOR 16-3

DECOR 16-4

DECOR 16-5

You can change a colour, the sizes and image proportions.
The maximum size for this print is unlimited.

DECOR ART

DECOR ART

A relief ornament is used for an apartment decoration for a long time. The ornaments, the borders, the eaves and the other modeled elements of the stylized repeating vegetative forms the leaves and the laurels garlands, eucalyptus, the palm trees, the grapevines were already created in the Ancient Greece and Rome.

SAROS DESIGN

DECOR 17-1



DECOR 17-2

DECOR 17-3

DECOR 17-4

DECOR 17-5

You can change a colour, the sizes and image proportions.
The maximum size for this print is unlimited.

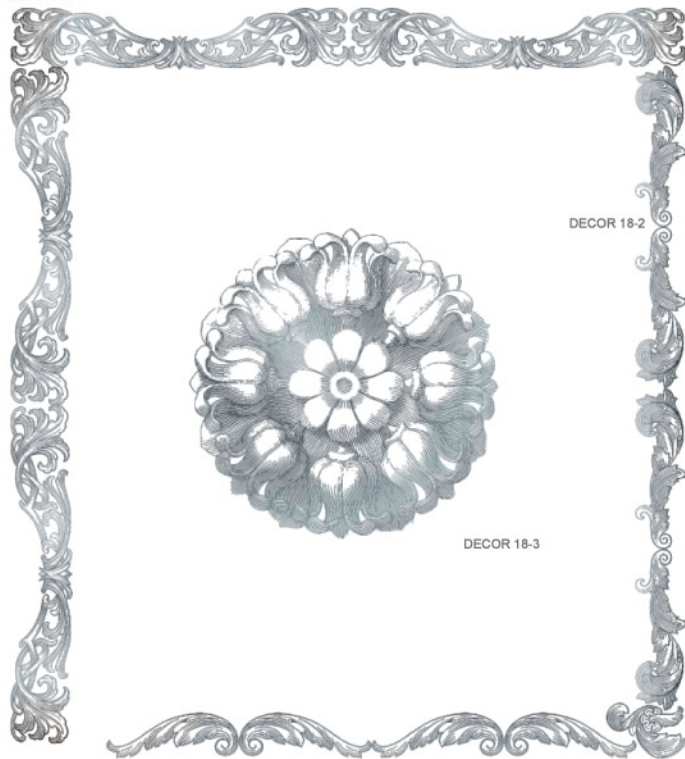
DECOR ART

DECOR ART

Till now antiquity excites general admiration of the inimitableness and the finished beauty, attracts with its harmony. The lush lacy leaves of the southern plants and the mighty flowers' buds cut in marble or cast in plaster, giving a picturesque treatment of light and shade, were made a strong impression.

SAROS DESIGN

DECOR 18-1



DECOR 18-2

DECOR 18-3

DECOR 18-4

You can change a colour, the sizes and image proportions.
The maximum size for this print is unlimited.

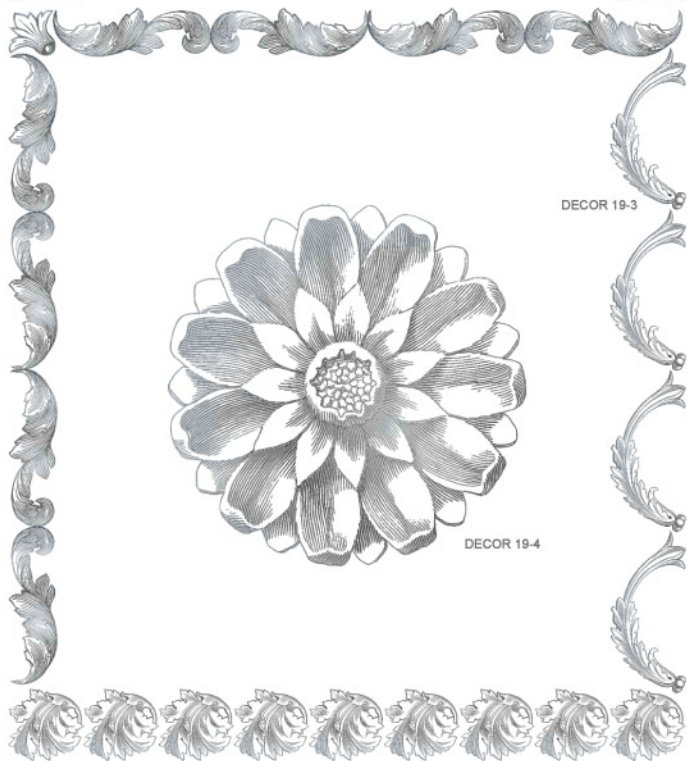
DECOR ART

DECOR ART

The ornament of the Renaissance style makes a start from antiquity; its decorative methods are universal and can be used in any century for any interior design. These are the embossed ornaments which can create a unique atmosphere.

SAROS DESIGN

DECOR 19-1



You can change a colour, the sizes and image proportions.
The maximum size for this print is unlimited.

DECOR ART WWW.SAROSEST.COM WWW.SARODESIGN.DE

DECOR ART

DECOR ART

The splendor and the grandiosity of Baroque excellently complied with the aspiration of the great to show their grandeur and wealth. The bases of Baroque were the stylistic canons of Renaissance with refinement of forms, a shine of gilding and a decor varnishing.

SAROS DESIGN

DECOR 20-1



You can change a colour, the sizes and image proportions.
The maximum size for this print is unlimited.

WWW.SAROSEST.COM WWW.SARODESIGN.DE DECOR ART

DECOR ART

DECOR ART
Rococo is a style of 18th century French art and interior design. Rococo still maintained the Baroque taste for complex forms and intricate patterns, but by this point, it had begun to integrate a variety of diverse characteristics, including a taste for Oriental designs and asymmetric compositions.

SAROS DESIGN

DECOR 21-1



DECOR 21-2

DECOR 21-3

DECOR 21-4

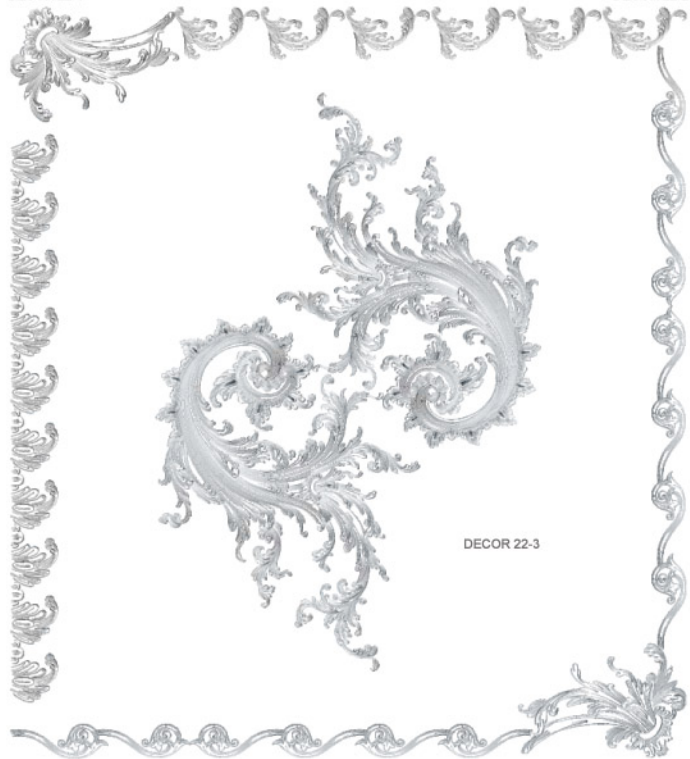
You can change a colour, the sizes and image proportions.
The maximum size for this print is unlimited.

DECOR ART

DECOR ART
Rocaille is the main element of an ornament of the Rococo style reminding the form of a shell curl. The most popular colour combinations are white with blue, green or pink and indispensable gold. "Gracelul" is a keyword of the Rococo epoch.

SAROS DESIGN

DECOR 22-1



DECOR 22-2

DECOR 22-3

DECOR 22-4

DECOR 22-5

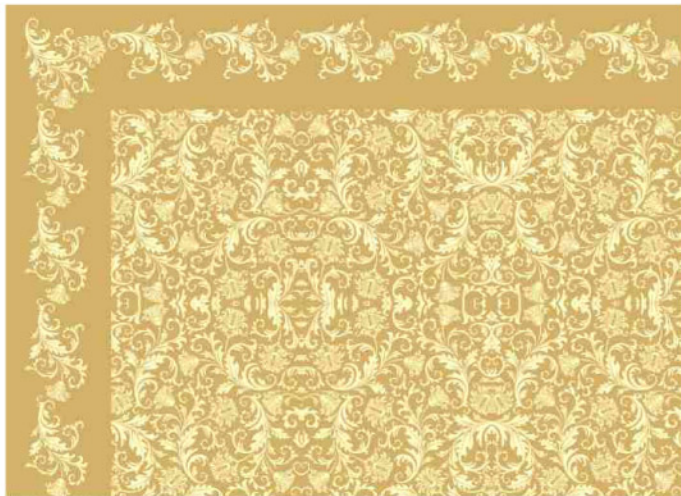
You can change a colour, the sizes and image proportions.
The maximum size for this print is unlimited.

DECOR ART

DECOR ART

The ornamentation styles can be studied in reference to the specific culture which developed unique forms of decoration, or modified ornament from the other cultures. The Ancient Egyptian culture is the first recorded civilization to add decoration to their buildings. These are the modern variants of a vegetative ornament.

SAROS DESIGN



DECOR 23



DECOR 24



DECOR 25

You can change a colour, the sizes and image proportions.
The maximum size for this print is unlimited.

DECOR ART

DECOR ART

One of the features of the Arabian decor is a "carpet" ornamentation where the pattern covers all surface of a subject or a construction by a principle «horror vacui» (fear of emptiness).

SAROS DESIGN



DECOR 26



DECOR 27



DECOR 28

You can change a colour, the sizes and image proportions.
The maximum size for this print is unlimited.

DECOR ART

DECOR ART

The Iranian decorative motives are more stylized and decorative. Turkish is closer to a natural prototype. The ornaments presented on these pages remind a modern wall-paper that gives a chance to many combinations in the various interiors.

SAROS DESIGN



DECOR 29



DECOR 30

You can change a colour, the sizes and image proportions.
The maximum size for this print is unlimited.



DECOR 31

DECOR ART WWW.SAROSEST.COM WWW.SARODESIGN.DE

DECOR ART

DECOR ART

There was often used a lotus or lotus petals in the decoration. Lotus is an attribute of a goddess Isis. This flower was epitomized with the sun, and its petals with solar beams. The vegetative elements rhythmically repeating, submitting to laws of the ornamental constructions, form attractive and unexpected patterns.

SAROS DESIGN



DECOR 32



DECOR 33

You can change a colour, the sizes and image proportions.
The maximum size for this print is unlimited.



DECOR 34

WWW.SAROSEST.COM WWW.SARODESIGN.DE DECOR ART

DECOR ART

DECOR ART

There is an ornament in the Khokhroma style. The traditional Khokhroma ornament is the vegetative drawings put freely by a brush, the juicy berries and the blossoming branches.

SAROS DESIGN



DECOR 35



DECOR 36



DECOR 37

You can change a colour, the sizes and image proportions.
The maximum size for this print is unlimited.

DECOR ART

DECOR ART

The works of the Gzhel masters differ by a reserved scale of colours with domination of dark blue cobalt. They bend to the special figurativeness and the magnificent skill of painting.

SAROS DESIGN



DECOR 38



DECOR 39



DECOR 40

You can change a colour, the sizes and image proportions.
The maximum size for this print is unlimited.

DECOR ART

DECOR ART
Ancient Greek civilization created many new forms of ornament.

SAROS DESIGN

DECOR 41



DECOR 42

DECOR 44

DECOR 43

DECOR 46

DECOR 45

DECOR 47

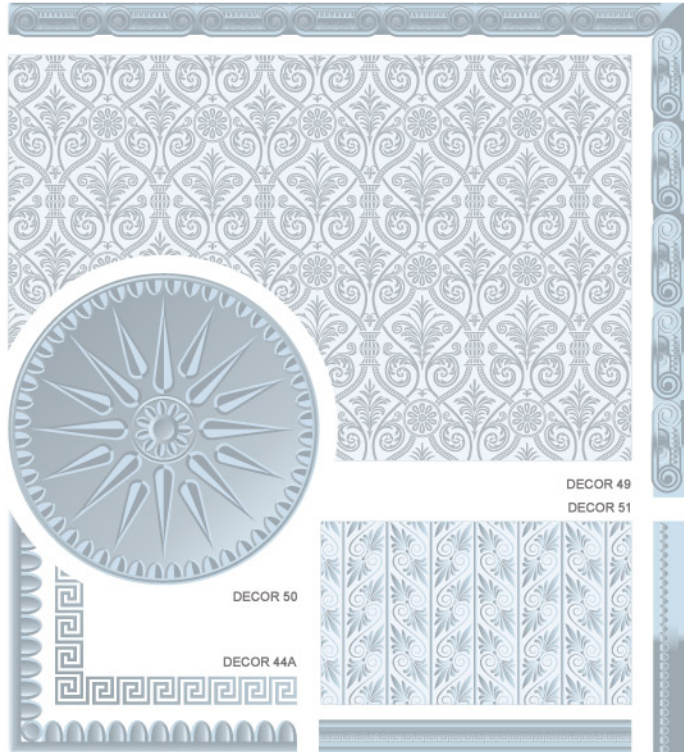
You can change a colour, the sizes and image proportions.
The maximum size for this print is unlimited.

DECOR ART

DECOR ART
The basic forms represent the weaving, the borders from palmette (lotus) and cups of a flower.
A meander is a decorative border constructed from a continuous line, shaped into a repeated motif. The name "meander" recalls the twisting and turning path of the Maeander River.

SAROS DESIGN

DECOR 48



DECOR 49

DECOR 51

DECOR 50

DECOR 44A

DECOR 52

DECOR 53

DECOR 54A

You can change a colour, the sizes and image proportions.
The maximum size for this print is unlimited.

DECOR ART

DECOR ART

One of the most ancient Celtic symbols is a labyrinth, the symbolical image of a human's way. The Celtic labyrinths invite to the centre to the spiritual beginning which is present everywhere. Much later English and Irish monks used such ornaments in early Christian manuscripts, showing the way to those who go on a spiritual way.

DECOR 54



DECOR 55

DECOR 56



DECOR 57



DECOR 58



DECOR 59



DECOR 60

You can change a colour, the sizes and image proportions.
The maximum size for this print is unlimited.

SAROS DESIGN

DECOR ART

DECOR ART

The Celtic ornament is made of the separate knots. Each knot is created from a separate thread a life thread. The life thread, an ornament thread is not interrupted anywhere, it passes from one element into another, and then, through set of interlacing, comes back. It is a symbol of continuity and a relation of all things in the Universe.

DECOR 61



DECOR 62

DECOR 64



DECOR 65

DECOR 66



DECOR 63

DECOR 67

You can change a colour, the sizes and image proportions.
The maximum size for this print is unlimited.

DECOR ART

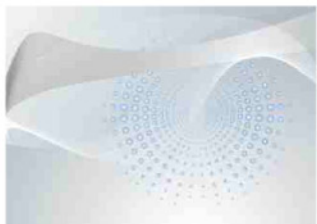
DECOR ART

Techno combines all possibilities of the modern technologies and a special atmosphere of the end of the world. The image as though merges with the language of the new technologies - cinema, TV and computer modeling, for example, a fractal is infinitely self-similar geometrical figure.

SAROS DESIGN



DECOR 68



DECOR 69

You can change a colour, the sizes and image proportions.
The maximum size for this print is unlimited.



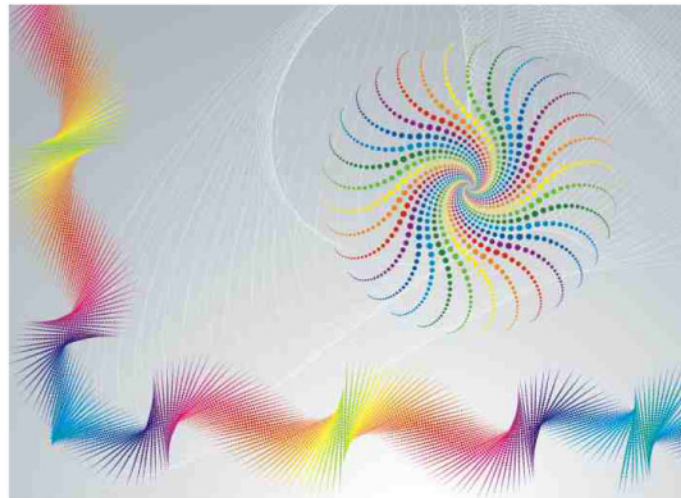
DECOR 70

DECOR ART

DECOR ART

The avant-garde in an interior strikes a chord to the person with the original feel and an independent way of thinking, choosing the freedom and the independence in all. The colour plays a dominant role in an interior; the avant-garde style is created on contrasts. Each detail should be original.

SAROS DESIGN



DECOR 71



DECOR 72

You can change a colour, the sizes and image proportions.
The maximum size for this print is unlimited.



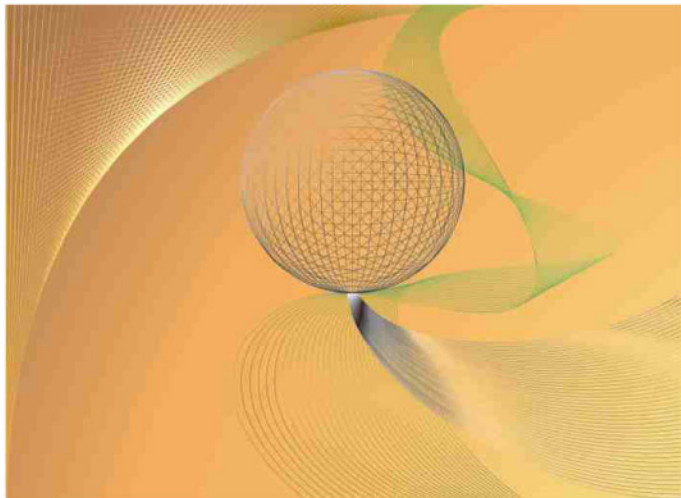
DECOR 73

DECOR ART

DECOR ART

You dream to have the house reminding a spaceship or maybe want to reproduce in the apartment some fragments of an interior of the future? There is nothing easier! Hi-Tech is popular now more than ever.

SAROS DESIGN



DECOR 74



DECOR 75

You can change a colour, the sizes and image proportions.
The maximum size for this print is unlimited.



DECOR 76

DECOR ART

DECOR ART

Today the curious mankind aspires to glance in the unknown future so to transfer from it a dream, at least partially, to the reality. Because of this tendency in art there were arisen a new style - Hi-Tech.

SAROS DESIGN



DECOR 77



DECOR 78

You can change a colour, the sizes and image proportions.
The maximum size for this print is unlimited.



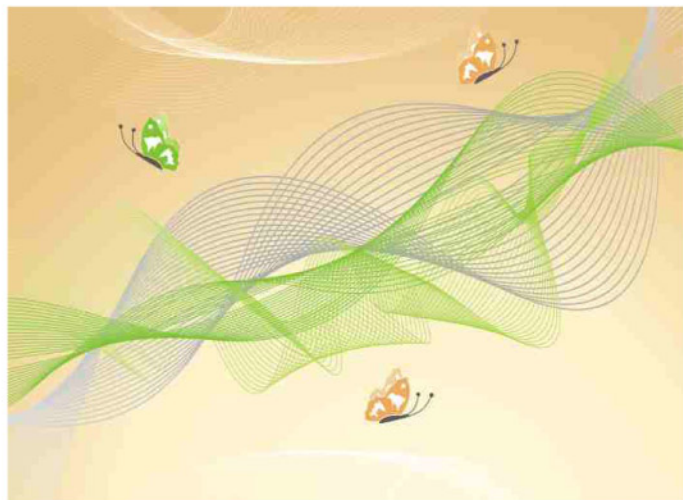
DECOR 79

DECOR ART

DECOR ART

Art Deco was a popular international art design movement from 1925 until 1939, affecting the decorative arts. At the time, this style was seen as elegant, glamorous, functional, and modern. In geometrical forms and rash lines it reflected the development progress of the new technologies.

SAROS DESIGN



DECOR 80



DECOR 81

You can change a colour, the sizes and image proportions.
The maximum size for this print is unlimited.



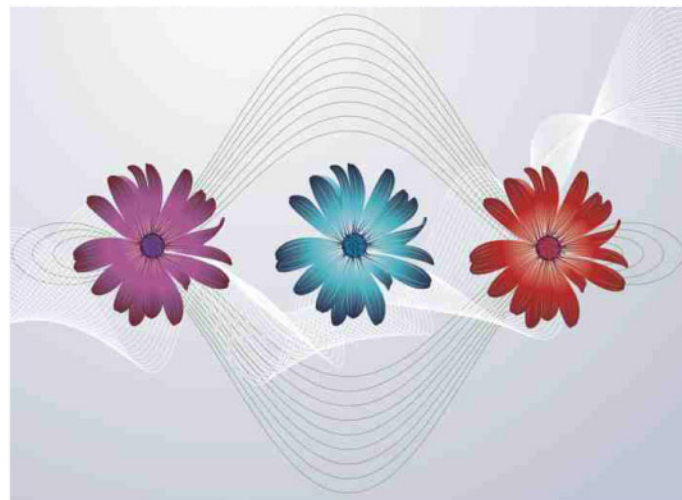
DECOR 82

DECOR ART

DECOR ART

The geometrical figures (a triangle, a square, a circle, a spiral) were one of the main components of the Art Deco ornament. This style symbolized philosophy of New time where the machine and the person have incorporated. Here you see the modern decors cast in the meantime.

SAROS DESIGN



DECOR 83



DECOR 84

You can change a colour, the sizes and image proportions.
The maximum size for this print is unlimited.



DECOR 85

DECOR ART

DECOR ART

Jugendstil is characterized by organic, especially floral and the other plant-inspired motifs, as well as highly-stylized, flowing curvilinear forms.

SAROS DESIGN



DECOR 86



DECOR 87

You can change a colour, the sizes and image proportions.
The maximum size for this print is unlimited.



DECOR 88

DECOR ART

DECOR ART

The curved lines, patterned surfaces, contrasting voids, and flatness of visual plane are also inspired Jugendstil. The connoisseurs eulogized Jugendstil for a cleanliness of the art concepts where the space has conceived a new functionality and a decorative sense.

SAROS DESIGN



DECOR 89



DECOR 90

You can change a colour, the sizes and image proportions.
The maximum size for this print is unlimited.



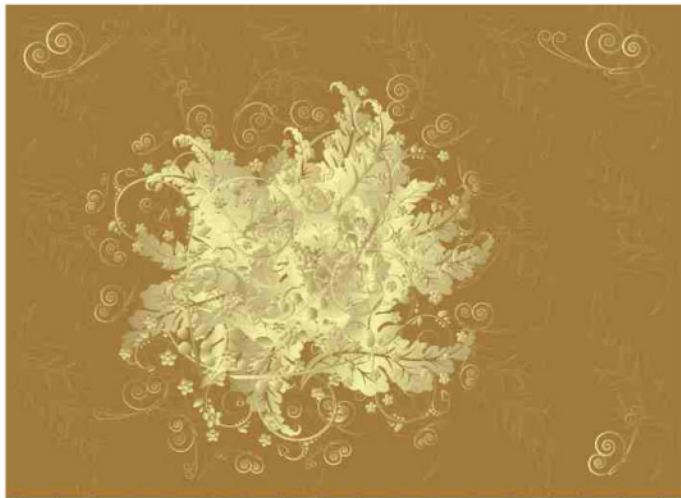
DECOR 91

DECOR ART

DECOR ART

The relief ornamental decor is used for a dwelling decoration for a long time. The ornaments, the borders, the eaves were already created in the Ancient Greece and Rome. There are some decors imitating an original kind of a folk decorative art a metal notch.

SAROS DESIGN



DECOR 92

DECOR ART

DECOR ART

These motives are cast by the impressions of a magnificent unique and original ornament art and calligraphy, connected together in an epigraphical ornament. It is created by the Arabic-Muslim decorative style.

SAROS DESIGN



DECOR 95



DECOR 93



DECOR 94



DECOR 96



DECOR 97

You can change a colour, the sizes and image proportions.
The maximum size for this print is unlimited.

You can change a colour, the sizes and image proportions.
The maximum size for this print is unlimited.

DECOR ART

DECOR ART

There are the modern variants of a vegetative ornament. The image reminds an engraving and differs by laconism.

SAROS DESIGN



DECOR 98



DECOR 99

You can change a colour, the sizes and image proportions.
The maximum size for this print is unlimited.



DECOR 100

DECOR ART

DECOR ART

The engraving represents a print on a paper; this is the peculiarity from the other art forms. For this reason the engraving native land is the paper native land - China.

SAROS DESIGN



DECOR 101



DECOR 104

You can change a colour, the sizes and image proportions.
The maximum size for this print is unlimited.



DECOR 102



DECOR 103



DECOR 105

DECOR ART

DECOR ART

The flower ornaments and the bright colours are capable to vary and give individuality to any interior.

SAROS DESIGN



DECOR 106



DECOR 107

You can change a colour, the sizes and image proportions.
The maximum size for this print is unlimited.



DECOR 108

DECOR ART

DECOR ART

The flower ornaments and the bright colours are capable to vary and give individuality to any interior.

SAROS DESIGN



DECOR 109



DECOR 110

You can change a colour, the sizes and image proportions.
The maximum size for this print is unlimited.



DECOR 111

DECOR ART

DECOR ART

The Chinese and the Japanese motives and the ornament elements always bear in themselves a secret sense or symbolic. The Japanese painting are closely aligned with the relation to the nature, the fantastic animals, the birds, the insects, the flowers were often represented.

SAROS DESIGN



DECOR 112



DECOR 113

You can change a colour, the sizes and image proportions.
The maximum size for this print is unlimited.



DECOR 114

DECOR ART WWW.SAROSEST.COM

WWW.SARODESIGN.DE

DECOR ART

DECOR ART

A stylization and a slice-of-life have mixed in the Chinese decor. The Chinese art came under influence of the various nomadic people. The meander (the symbolical image of a thunder) is also used in Chinese art, it shapes into a repeated motif but it is not continuous, as Greek.

SAROS DESIGN



DECOR 115

DECOR 116

DECOR 117

DECOR 118

DECOR 119

You can change a colour, the sizes and image proportions.
The maximum size for this print is unlimited.

WWW.SAROSEST.COM

WWW.SARODESIGN.DE

DECOR ART

DECOR ART

DECOR ART
The flower ornaments and the bright colours are capable to vary and give individuality to any interior.

SAROS DESIGN



DECOR 120



DECOR 121



DECOR 122



DECOR 123



DECOR 124



DECOR 125



DECOR 126



DECOR 127



DECOR 128

You can change a colour, the sizes and image proportions.
The maximum size for this print is unlimited.

DECOR ART

DECOR ART
The flower ornaments and the bright colours are capable to vary and give individuality to any interior.

SAROS DESIGN



DECOR 129



DECOR 130



DECOR 131



DECOR 132



DECOR 133



DECOR 134



DECOR 135



DECOR 136



DECOR 137

You can change a colour, the sizes and image proportions.
The maximum size for this print is unlimited.

DECOR ART

DECOR ART

The flower ornaments and the bright colours are capable to vary and give individuality to any interior.

SAROS DESIGN

DECOR ART

DECOR ART

The flower ornaments and the bright colours are capable to vary and give individuality to any interior.

SAROS DESIGN



DECOR 138



DECOR 139



DECOR 140



DECOR 147



DECOR 148



DECOR 149



DECOR 141



DECOR 142



DECOR 143



DECOR 150



DECOR 151



DECOR 152



DECOR 144



DECOR 145



DECOR 146



DECOR 153



DECOR 154



DECOR 155

You can change a colour, the sizes and image proportions.
The maximum size for this print is unlimited.

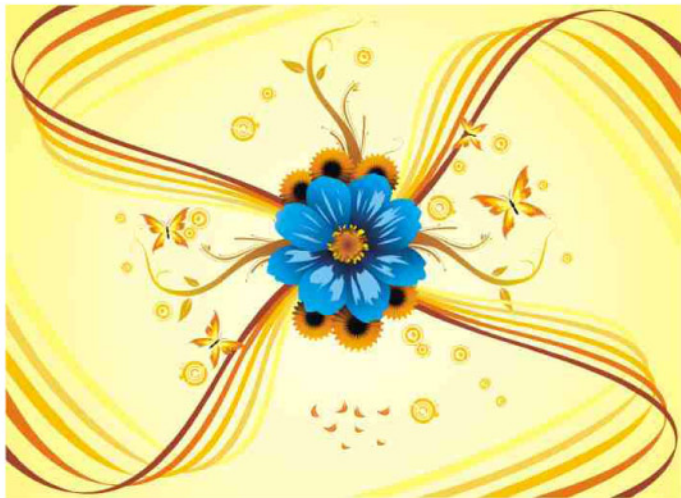
You can change a colour, the sizes and image proportions.
The maximum size for this print is unlimited.

DECOR ART

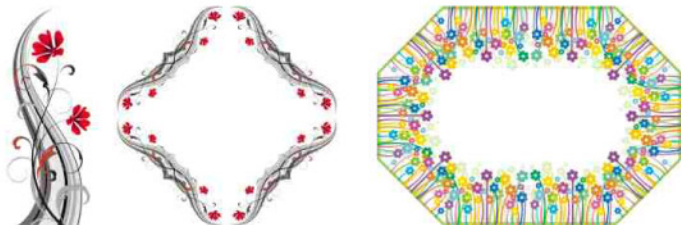
DECOR ART

Various flower motives, rhythmically repeating, submitting to the laws of an ornamental composition, make the attractive and the unexpected patterns.

SAROS DESIGN



DECOR 156



DECOR 157

DECOR 158

You can change a colour, the sizes and image proportions.
The maximum size for this print is unlimited.

DECOR ART WWW.SAROSEST.COM

WWW.SARODESIGN.DE

DECOR ART

DECOR ART

Variations of the stylized colours and the difficult wavy forms will add the space and the individuality to any modern interior.

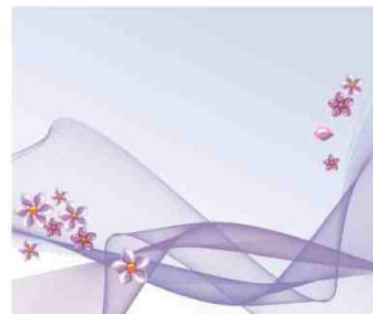
SAROS DESIGN



DECOR 159



DECOR 160



DECOR 161

You can change a colour, the sizes and image proportions.
The maximum size for this print is unlimited.

WWW.SAROSEST.COM

WWW.SARODESIGN.DE DECOR ART

DECOR ART

DECOR ART

The translucent images of the leaves will visually add air in a premise and will create a romantic atmosphere.

SAROS DESIGN



DECOR 162



DECOR 163

You can change a colour, the sizes and image proportions.
The maximum size for this print is unlimited.



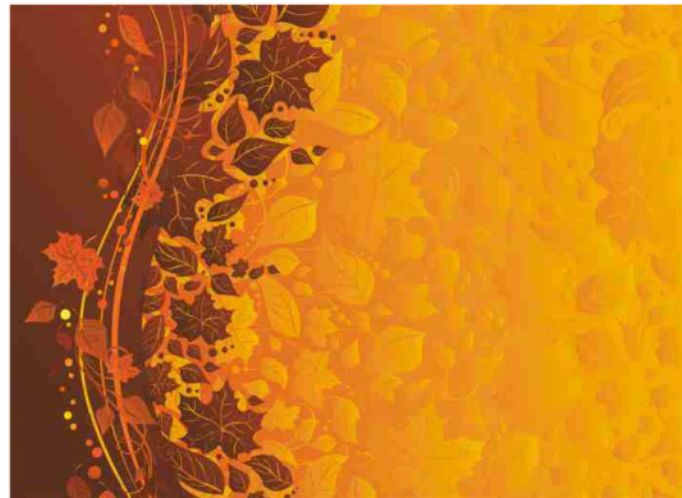
DECOR 164

DECOR ART

DECOR ART

The energetic of these leaves will bring a sense of warmth and coziness in any interior, even in a dank winter day.

SAROS DESIGN



DECOR 165



DECOR 166

You can change a colour, the sizes and image proportions.
The maximum size for this print is unlimited.



DECOR 167

DECOR ART

DECOR ART

These motives give the feeling of unusual ease in a rest - room. It is not casual that the word "butterfly" in the Greek language was a synonym of a soul. The bright colours and patterns of these insects' wings were the reason of their second name, a very poetical name - the «flying flowers».

SAROS DESIGN



DECOR 168

DECOR ART

DECOR ART

The art images of the butterflies were used in many cultures, including the Egyptian hieroglyphs dated three and a half thousand years ago. Nowadays the butterflies are used everywhere in the various art works.

SAROS DESIGN



DECOR 172



DECOR 169

You can change a colour, the sizes and image proportions.
The maximum size for this print is unlimited.



DECOR 170



DECOR 173

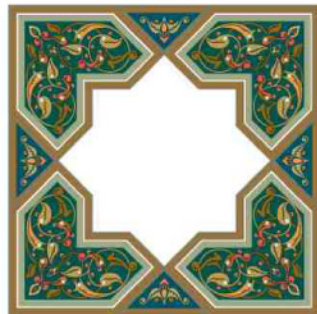
You can change a colour, the sizes and image proportions.
The maximum size for this print is unlimited.



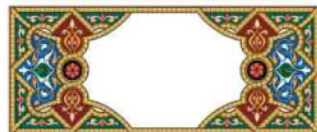
DECOR 174

DECOR ART

DECOR ART
Arabesque art consists of the series of the repeating geometric forms which are occasionally accompanied by calligraphy and often echo the forms of plants.
Arabesque usually has a composition which allows to cover a surface of the big extent and any outline by a continuous pattern.



DECOR 175



DECOR 177



DECOR 179



DECOR 180

You can change a colour, the sizes and image proportions.
The maximum size for this print is unlimited.

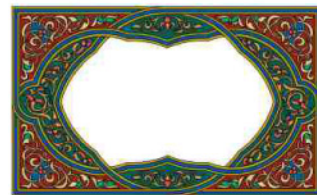
SAROS DESIGN

DECOR ART

DECOR ART
Arabesque is designed with the idea of giving new life into conventional decorative items. Inspired by art and architectural designs from the Middle-East, Arabesque gives a new perspective to home as well as fresh designs of the interior.



DECOR 183



DECOR 184

You can change a colour, the sizes and image proportions.
The maximum size for this print is unlimited.

SAROS DESIGN



DECOR 182



DECOR 185



DECOR 186



DECOR 187



DECOR 188



DECOR 189

DECOR ART

DECOR ART

Nowadays a special style of a stucco ornament endures a rebirth. It gives individuality and nobleness to any premise, even to typical apartment. The variety of relieves is boundless, the walls and the ceilings are decorated with it. It is possible to load a relief to all possible surfaces so not to leave a smooth place or, on the contrary, to be limited to the modest socket and refined caves under the ceiling.

SAROS DESIGN

DECOR 190



DECOR 191

DECOR 192

DECOR 193

DECOR 194

DECOR 195

DECOR 196

You can change a colour, the sizes and image proportions.
The maximum size for this print is unlimited.

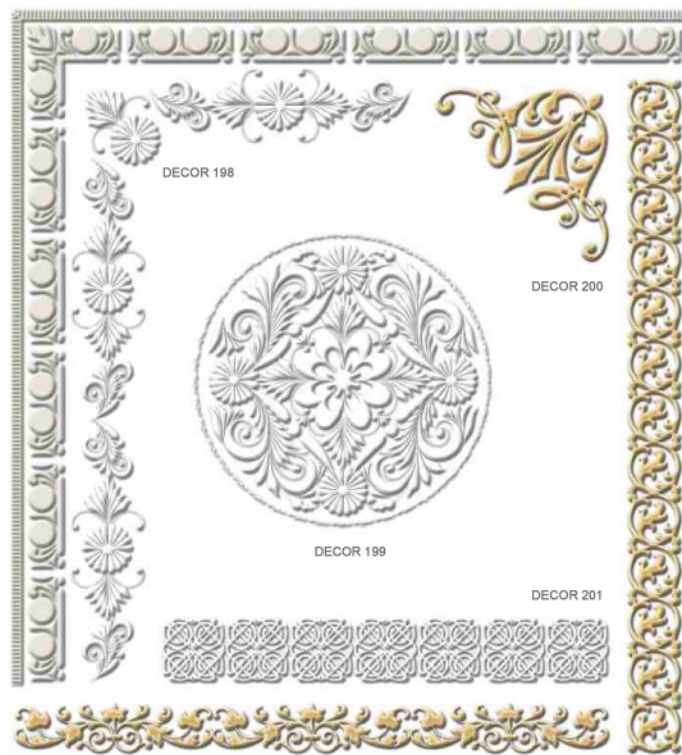
DECOR ART

DECOR ART

The colour scores can be different a white relief on a colour background, white on white, colour on colour. The volume elements can look like a stucco moulding, gilding, bronze, chromium-plating, a stamping and a carving. Many of the decors presented in the catalogue can be executed in a relief kind.

SAROS DESIGN

DECOR 197



DECOR 198

DECOR 200

DECOR 199

DECOR 201

DECOR 202

DECOR 203

You can change a colour, the sizes and image proportions.
The maximum size for this print is unlimited.

**SAROS
DESIGN**



Bs2d0



Saros Est OÜ
Oru 18A
20205 Narva
Estonia
tel.: +372 35-66320(21)
info@sarosest.com
www.sarosest.com

Saros Design Spanndecken Vertriebs GmbH
Jusiweg 10
73734 Esslingen
Germany
Tel: +49-711-91284991
Fax: +49-711-93691299
info@sarosdesign.de
www.sarosdesign.de

**PREMIUM
TECHNOLOGY
ART**